



The OE Elsafe SWIFT surface mounted floor box is an excellent solution for power, data and AV provision in open spaces. SWIFT provides services for workstations and boardroom tables where installing an in-floor box is not suitable or possible.

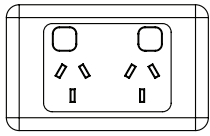
The simple yet clever design of the SWIFT allows for the installation of standard OE Elsafe QIKFIT series data and AV tiles as well as industry standard wall mounted plates.

The compact SWIFT has been designed with a tool-less "easy lock" movable internal data barrier which can be adjusted to suit required data cable bending radii. The SWIFT has been designed with a brushed stainless steel finish to fit in with the most stylish office environment. Fast and easy to install.

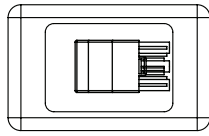


Common Components

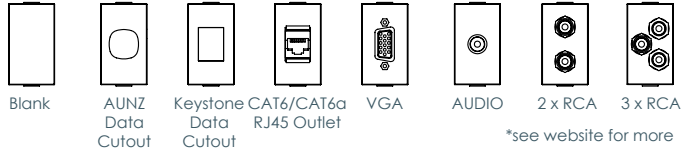
GPO Plate Options**



Industry Standard
Wall Plate

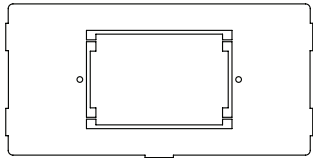


Wieland
GST Starter Plate

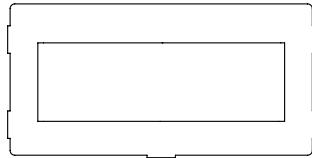


QF5 Tiles to provide Data and AV solutions

Plate Options

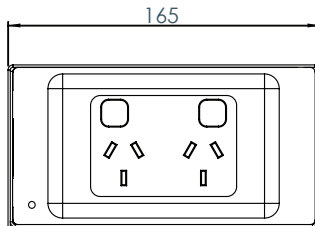


Industry Standard Wall Plate
/ Data Barrier

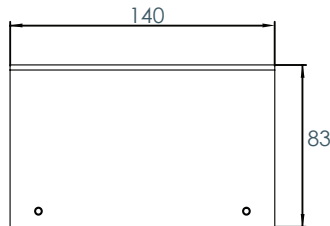


OE Elsafe
Data & AV Plate

Swift Dimensions



Front View



Side View

Features

- The design of the SWIFT floor mounted box allows for quick and easy installation.
- The SWIFT is ideal for situations where power and data/AV is required in open spaces where a floor box solution is not possible or desired.
- The SWIFT has been designed to allow for an array of OE Elsafe components to suit your specific installation including the OE ELSAFE range of Data and AV fittings in QF5 tiles.
- The SWIFT has also been designed to accept industry standard wall mounted GPO's and industry standard data bezels to accept RJ45 data jacks.
- The multifunctional "snip to suit" plates act as both mounting for the desired components or as internal power/data segregation.
- The multifunctional "snip to suit" plates are easily movable and replaceable, and lock in place without the use of screws or tools.
- Stylish Brushed Stainless Steel Finish
- Swift is designed and intended for commercial use.

